

LevelMaster®

Stronger. Easier. Faster.

PRODUCT CATALOGUE



ADJUSTABLE
HOUSE STUMPS



ADJUSTABLE
BRACING

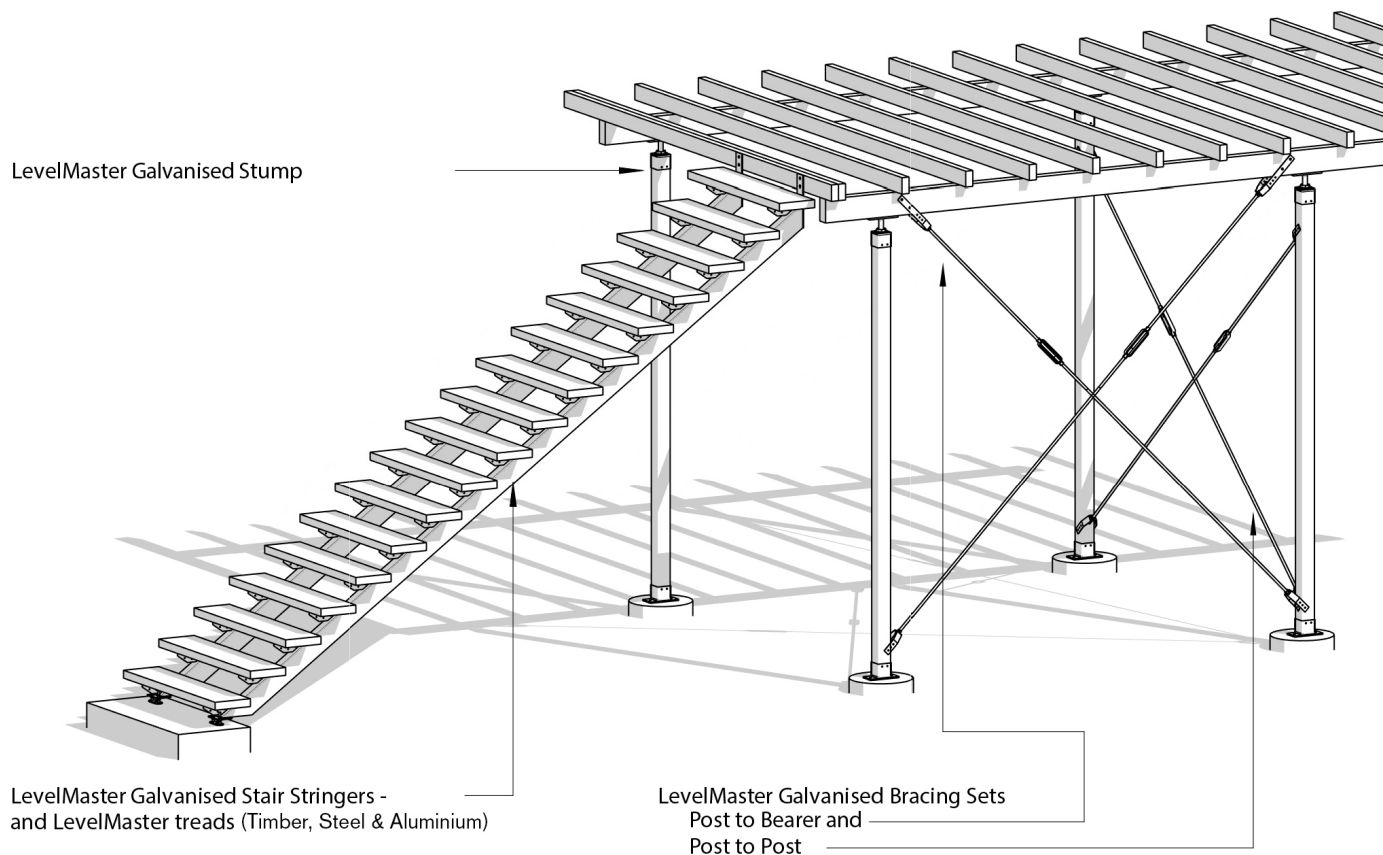


ADJUSTABLE
STAIR STRINGERS

1300 538 356

Stronger. Easier. Faster.

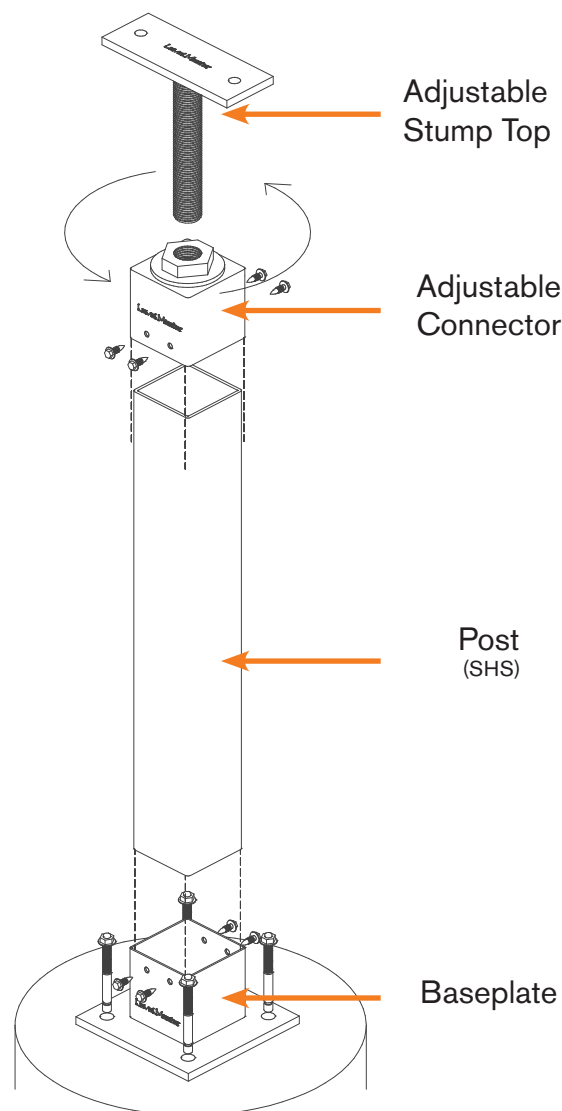
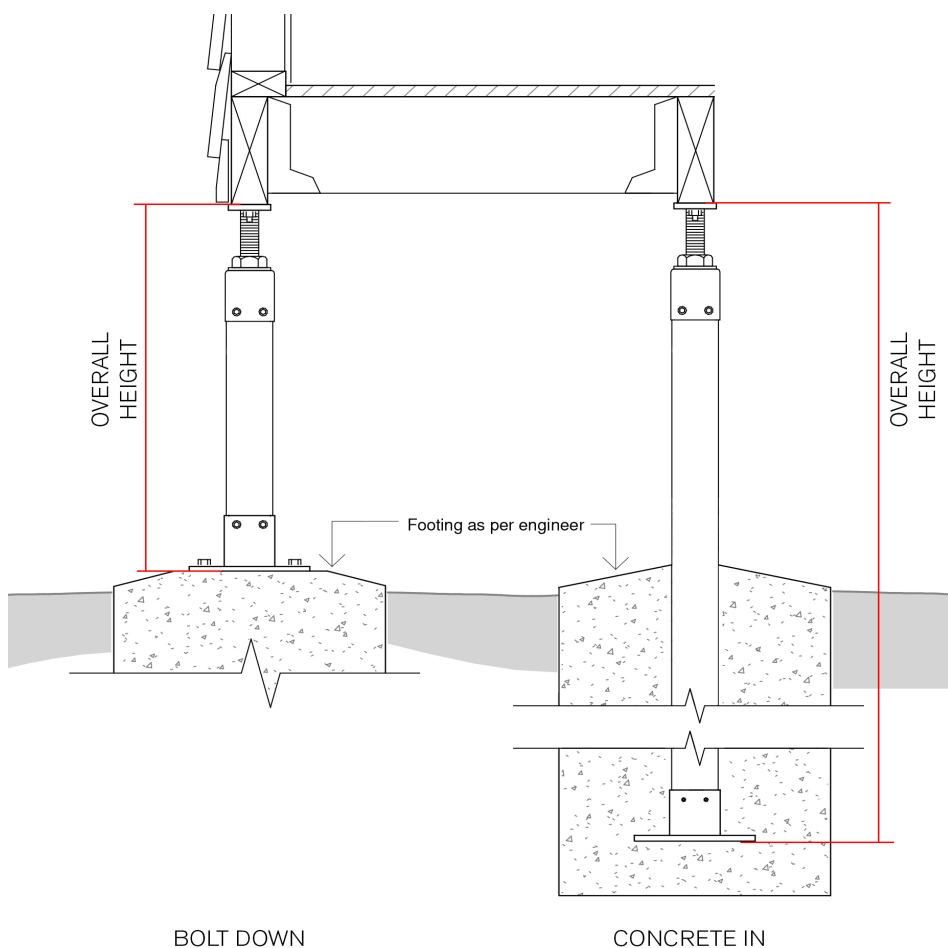
LevelMaster



1300 538 356

Australian Patent # 2011226918

Stump Components



Post Material Selection Chart

Width	Stocked Wall Thicknesses		
75 x 75mm	3mm	4mm	5mm
89 x 89mm	3.5mm	5mm	
100 x 100mm	3mm	4mm	5mm

Other Wall Thicknesses Available To Order
We cut to any length and assemble screw fixed stumps for free!
Also available in hot dip gal (lead times apply)



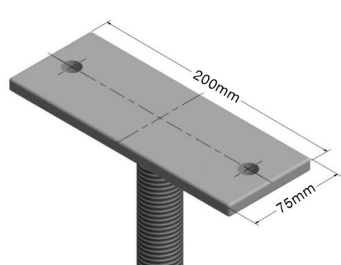
1300 538 356

Stump Tops

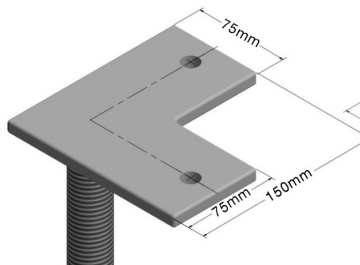
Galvanised LevelMaster Tops

A custom M30 thread specifically designed for all LevelMaster Connectors

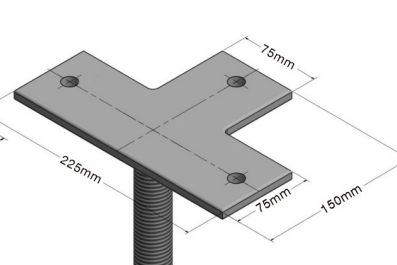
Traditional Solid Hardwood Bearers



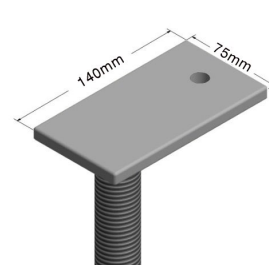
Straight
10mm Thick
14mm Bolt Holes
Code: **S**



Corner
10mm Thick
14mm Bolt Holes
Code: **C**

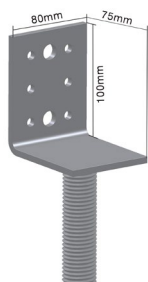


Tee
10mm Thick
14mm Bolt Holes
Code: **T**

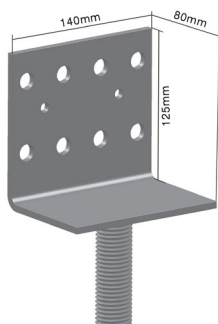


End Of Bearer
10mm Thick
14mm Bolt Hole
Code: **E**

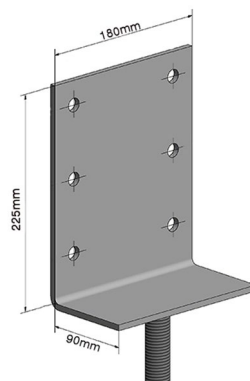
LVL Bearers & The Retrofit Market



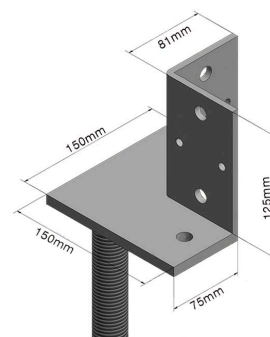
Vertical Small
6mm Thick
8mm & 14mm Bolt Holes
Code: **VS**



Vertical Large
6mm Thick
8mm & 14mm Bolt Holes
Code: **VL**

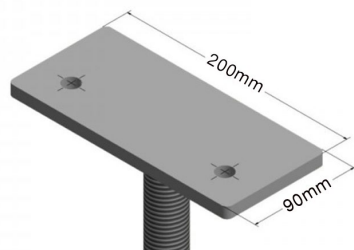


Vertical Extra Large
6mm Thick
14mm Bolt Holes
Code: **VLXL**

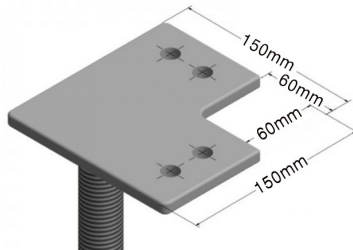


Vertical Large Corner
10mm Thick
8mm & 14mm Bolt Holes
Code: **VLC**

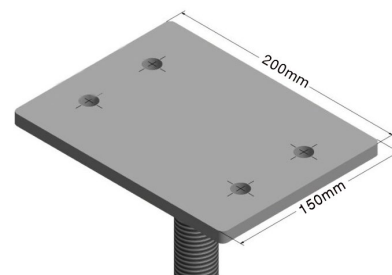
C-Purlin Style Floors



Straight Offset Hole
10mm Thick
14mm Bolt Holes
Code: **SOH**



Corner 4 Holes
10mm Thick
14mm Bolt Holes
Code: **C4**



Straight 4 Hole
12mm Thick
14mm Bolt Holes
Code: **S4**

1300 538 356

Stump Tops

Galvanised LevelMaster Tops

Australian Patent # 2011226918

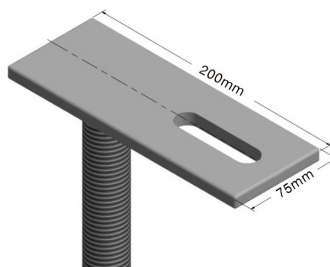
A custom M30 thread specifically designed for all LevelMaster Connectors

UC / I Beam Steel Bearers



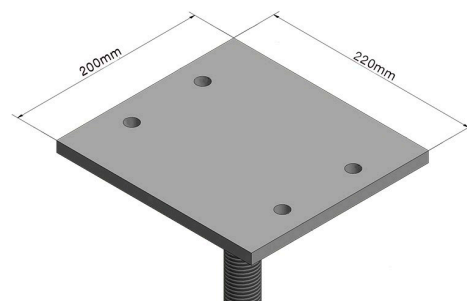
Straight Slotted

12mm Thick
18 x 40mm Slots - Use with D-clamp kit
Code: **SS**



End Slotted

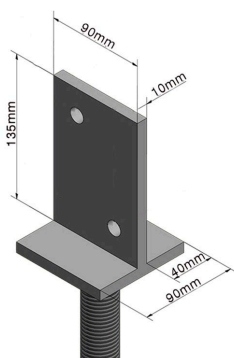
12mm Thick
18 x 70mm Slot - Use with D-clamp kit
Code: **ES**



Straight Large

12mm Thick
14mm Bolt Holes
Code: **SL**

Timber Post Connections

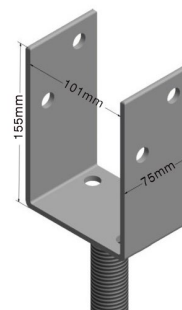


Vertical Plate 90

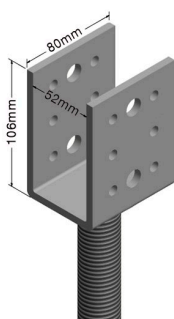
10mm Thick
14mm Bolt Holes
Code: **VP90**

Stirrup

6mm Thick
14mm Bolt Holes
Code: **STI-100**



Container Locks and Steel Hollow Section

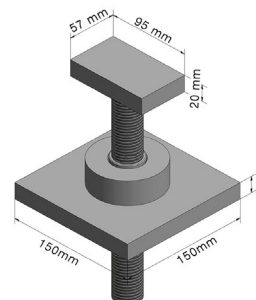


Stirrup 50mm

6mm Thick
8mm & 14mm Bolt Holes
Code: **STI-50**

Container Lock

Code: **CL**
More Info Page 10



Need more help with selecting the right LevelMaster top for your needs? Scan the QR Code on the right.
Or go to levelmaster.com.au/tops



Top Connectors

Connects the post to a LevelMaster top allowing up 120mm of adjustment.

Screw On Connectors

Effortless installation, with a slip over sleeve that is secured with 4 x 14 gauge TEK screws.

Fits all SHS wall thicknesses.

- To suit a 75mm Post // Code: **SO-75**
- To suit a 90mm Post // Code: **SO-90**
- To suit a 100mm Post // Code: **SO-100**



Weld On Connectors

Welded onto SHS stump for maximum strength.

- To suit a 75mm Post // Code: **WO-75**
- To suit a 90mm Post // Code: **WO-90**
- To suit a 100mm Post // Code: **WO-100**
- To suit a 150mm Post // Code: **WO-150**



Screw Pile Connectors

Note: LevelMaster does **not** supply screw piles

- To suit a 76mm Pile // Code: **SP-76**
- To suit a 90mm Pile // Code: **SP-90**
- To suit a 114mm Pile // Code: **SP-114**



Round Ant Cap

Suits 300mm Round Post
Code: **AC-300-RD**



Square Ant Cap

Suits 200mm x 200mm Square Post
Code: **AC-200-SQ**



Stump Antcap

Pre-fitted accessory for
SO-75 / SO-90 / SO-100 / SP-76 / SP-90
Code: **AC-150-AJT**

1300 538 356

Australian Patent # **2011226918**

Screw On Bases



Don't forget your fixing hardware
See Page 10



Base to cast into concrete

Suit a 75mm Post // 90mm x 120mm Code: **BCI-75-120**
Suit a 90mm Post // 100mm x 150mm Code: **BCI-90-150**
6mm Plate



2 Hole Base Bolt Down

Suit a 75mm Post // 80mm x 200mm Code: **BBD-75-200**
Suit a 90mm Post // 100mm x 200mm Code: **BBD-90-200**
Suit a 100mm Post // 110mm x 200mm Code: **BBD-100-200**
8mm Plate & 14mm Bolt Holes



4 Hole Base Bolt Down

Suit a 75mm Post // 180mm Square Code: **BBD-75-4H**
Suit a 90mm Post // 180mm Square Code: **BBD-90-4H**
Suit a 100mm Post // 180mm Square Code: **BBD-100-4H**
10mm Plate & 14mm Bolt Holes

Suit a 75mm Post // 210mm Square Code: **BBD-75-4H-L**
Suit a 90mm Post // 210mm Square Code: **BBD-90-4H-L**
Suit a 100mm Post // 210mm Square Code: **BBD-100-4H-L**
12mm Plate & 18mm Bolt Holes

Adjustable Stair Stringers

Key Advantages

- Hot Dipped Galvanised
- Fully Engineered and Compliant
- Height Adjustable
- One Stringer Design - 3 Fixing Options

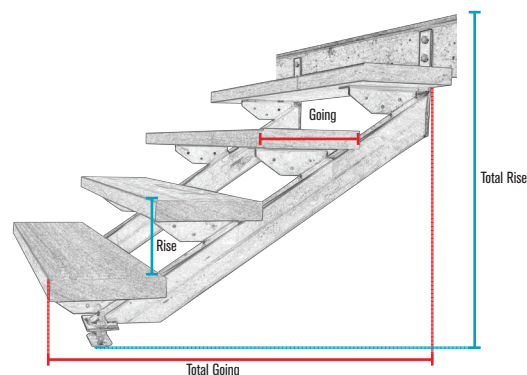
Rise: **175mm** Going: **250mm**

Custom sizes made to order - See website for calculator

Treads	Total Rise	Total Going	Concrete In Code	Bolt Down Code
1	350mm	250mm	1T-SSCI	1T-SSBD
2	525mm	500mm	2T-SSCI	2T-SSBD
3	700mm	750mm	3T-SSCI	3T-SSBD
4	875mm	1000mm	4T-SSCI	4T-SSBD
5	1050mm	1250mm	5T-SSCI	5T-SSBD
6	1225mm	1500mm	6T-SSCI	6T-SSBD
7	1400mm	1750mm	7T-SSCI	7T-SSBD
8	1575mm	2000mm	8T-SSCI	8T-SSBD
9	1750mm	2250mm	9T-SSCI	9T-SSBD
10	1925mm	2500mm	10T-SSCI	10T-SSBD
11	2100mm	2750mm	11T-SSCI	11T-SSBD
12	2275mm	3000mm	12T-SSCI	12T-SSBD
13	2450mm	3250mm	13T-SSCI	13T-SSBD
14	2625mm	3500mm	14T-SSCI	14T-SSBD
15	2800mm	3750mm	15T-SSCI	15T-SSBD
16	2975mm	4000mm	16T-SSCI	16T-SSBD
17	3150mm	4250mm	17T-SSCI	17T-SSBD



4T-SSBD installed with Merbau Treads.

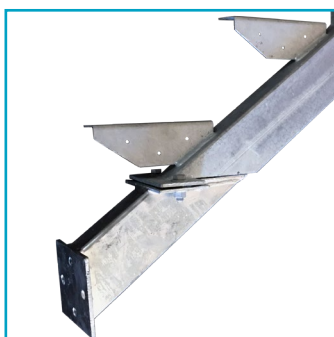


Australian Innovation Patent # **2016101221**

One Stringer Design With Interchangeable Fixing Options



Bolt Down

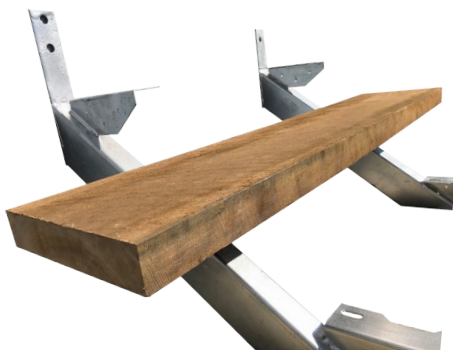


Landing To Landing



Cast Into Concrete

Stair Stringer Accessories



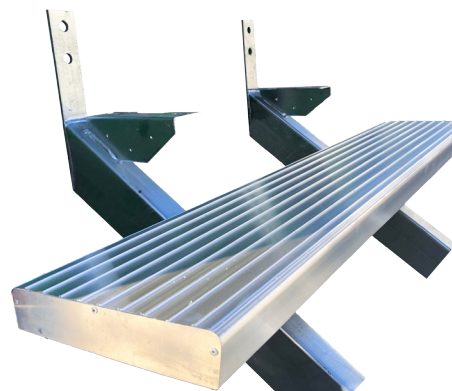
Timber Hardwood Tread

250mm W x 50mm T x 1200mm L
Rough Sawn Hardwood *Dressing required*
Code: **TT-HWD-1200**



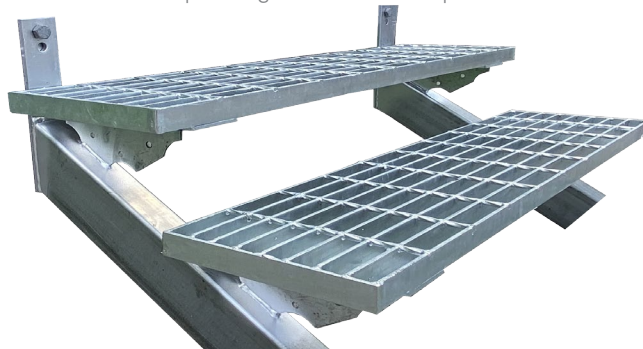
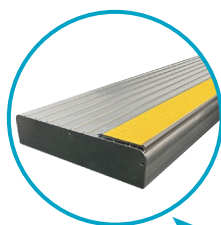
Merbau Tread

250mm W x 45mm T x 1200mm L
Dressed with P4 non-slip nosing
Code: **TT-KWA-1200**



Aluminium Tread Kit

250mm W x 50mm T x 1200mm L
Endplates, rivets and bolts supplied loose
Code: **TT-Alum-1200-Kit**
Non-slip nosing available as an optional extra



Steel Tread

250mm W x 50mm T x 1200mm L
HDG Steel mesh
Code: **TT-Steel-1200**

Timber and Aluminium treads available in custom lengths upon request (lead times apply)



Step Tread Bracket

Zinc Plated
200mm x 60mm x 70mm H
Weld or Scrow on
Code: **STBK-ZN**



Landing to Landing Adaptor

Simply bolts to any existing 2 to 10 step
LevelMaster Stringer. Patented
Code: **L-L**

*Need more stair stringer information?
Scan the QR code to the right
Or go to levelmaster.com.au/stair-stringers*



Miscellaneous



Bracing Set (Full Cross Brace) Galvanised

End brackets suit 75mm / 90 / 100 mm posts.
Both post to post or post to bearer connections.
Fully engineered and certified.
Set comprises 16mm threaded rods, turn buckle, end brackets.
Standard span is 3 metre per diagonal with 2 diagonals per set.
Extendable to any length; additional M16 threaded rod and coupler joiners sold separately.

Bracing Set Code: **BR-75-90-Set**

Extender Kit Codes: **TR-M16, CP-16**



Tek Screw Driver

To suit 3/8

Code: **TK-Driver**



Thunder Bolt Concrete Screw

Thunder Bolt M12 x 100mm

Code: **TNDR-B**



Anchor Bolt

Chemset M12 x 160mm (pictured)

Code: **CA-M12-160**

Through Bolt M12 x 80mm

Code: **TB-M12-80**

Through Bolt M12 x 120mm

Code: **TB-M12-120**



Tek Screws

Metal

Code: **TK-14-SDS** 14 gauge x 22mm

Timber

Code: **TK-17-40** Type 17 x 40mm

Code: **TK-17-50** Type 17 x 50mm



Coach Screws

M8 x 40mm // Code: **CS-M8-40**

M12 x 75mm // Code: **CS-M12-75**

M12 x 100mm // Code: **CS-M12-100**



Cup Head Coach Bolt

M10 x 65mm // Code: **CB-M10-65**

M10 x 75mm // Code: **CB-M10-75**

M12 x 75mm // Code: **CB-M12-75**

M12 x 100mm // Code: **CB-M12-100**

M12 x 130mm // Code: **CB-M12-130**



Heavy Duty Bracket

Bracket: 100 x 75 x 130 x 8mm

Bolt Hole: 14mm Slot: 14 x 75mm

Code: **BKHD**



Dog Clamp Kit

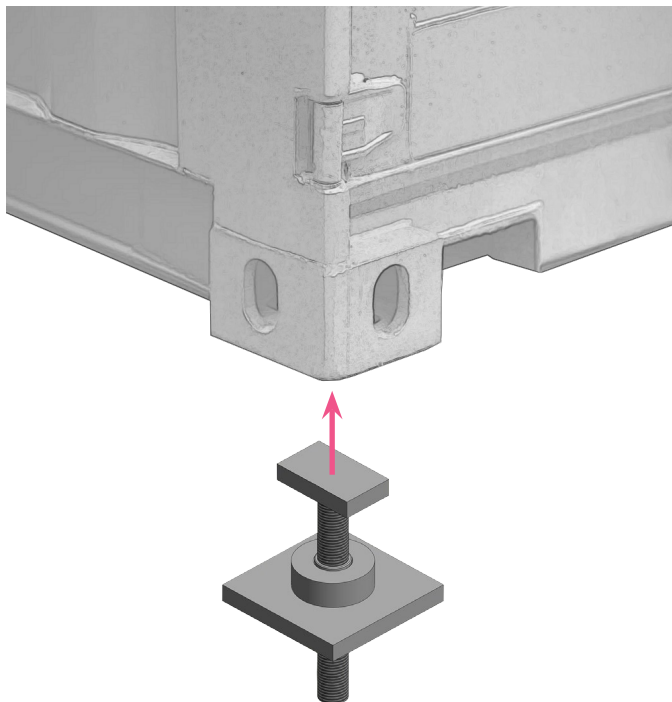
Clamp: 100mm x 75mm

Bolt: M16 x 60mm // M12 x 50mm

Code: **D-CLAMP**

Used with ES Top

Specialised Applications



Container Lock

Adjustable Top For Shipping Containers
Fits into Transport Lock
Secure and Fully engineered
Easy to Install
Use with 75, 90 and 100mm posts
Hot Dipped Galvanised for long life
Exclusive to LevelMaster
Code: **CL**



Retro Fit Joiner

Suits 75mm / 90mm / 100mm / 125mm
Concrete, Timber, and Steel Posts.
Uses 90mm Connector &
Your Choice of Top
Code: **RJ-90**



Stump Top of
your choice
VL Pictured

SO-90 or
WO-90
SO-90 Pictured

Retro-Fit Joiner
Suits Concrete,
Timber and Steel

Fixing
Screwed or bolted
to existing post.



ADJUSTABLE HOUSE STUMPS

Stronger. Easier. Faster. **LevelMaster.**



levelmaster.com.au
1300 538 356
sales@levelmaster.com.au

BRISBANE 07 3390 4656
260 New Cleveland Road via Ingleston Road
Tingalpa QLD 4173
tingalpa@levelmaster.com.au

TOOWOOMBA 07 4633 3623
549 Boundary Street
Toowoomba QLD 4350
toowoomba@levelmaster.com.au

